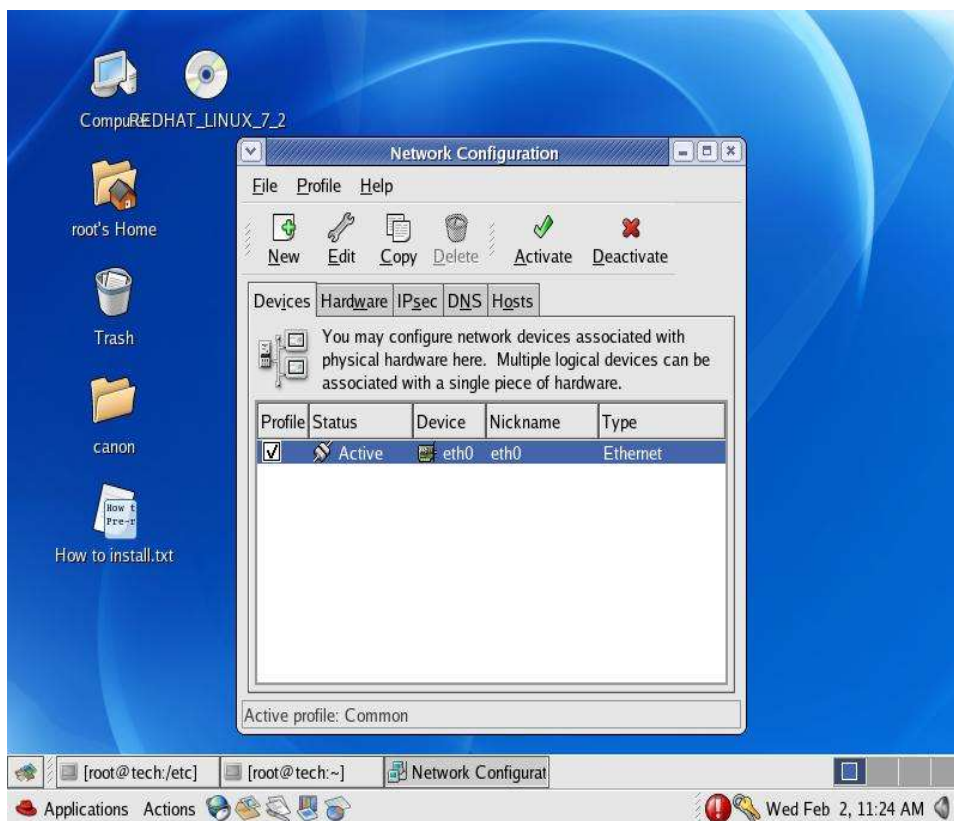


Connecting Linux PC to Broadband Modem -

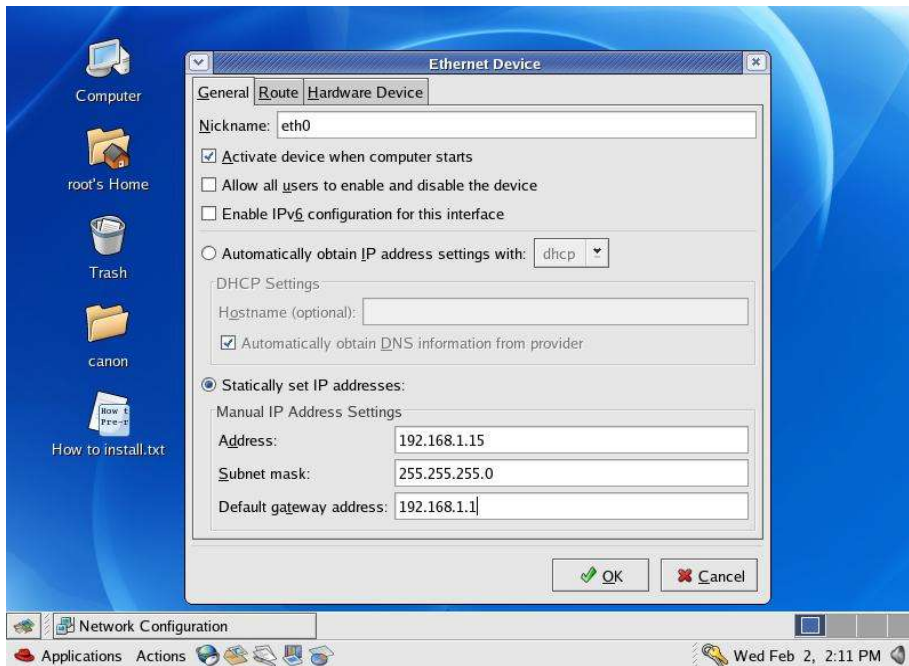
A PC with Linux operating system can be connected to the ADSL Modem using LAN port only and not the USB port as currently the USB driver for Linux is not available.

- Set-up the modem as per the CPE configuration document.
- The IP address and DNS server address is required to be setup on the Linux PC for enabling communication between PC and ADSL Modem. The procedure to set-up up these is detailed below -

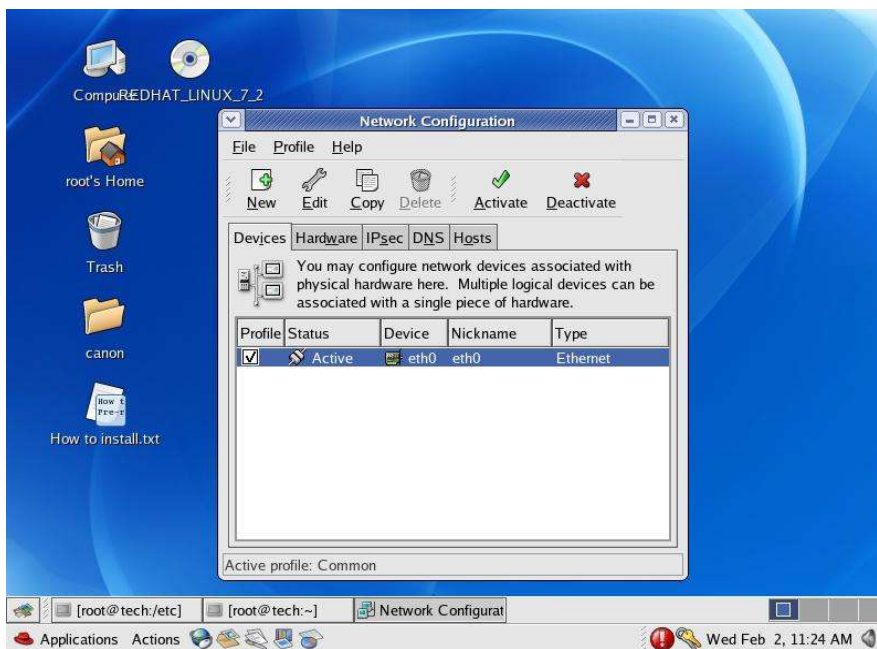
A typical Linux desktop looks as given below -



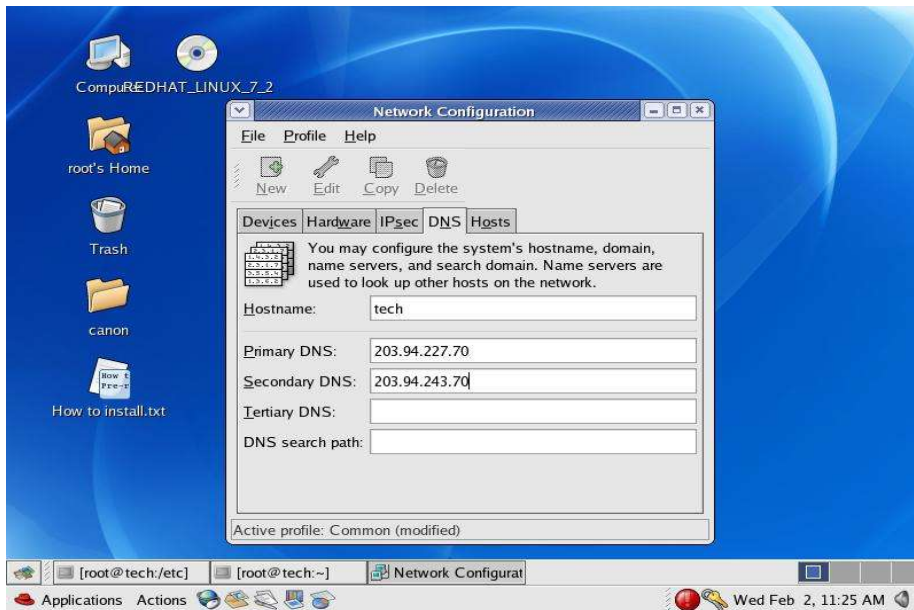
- Click on Applications, then on System Settings.
- Open the network configuration window.
- Select the Ethernet port to which IP address is to be assigned and click on "Edit". Normally this would be eth0.



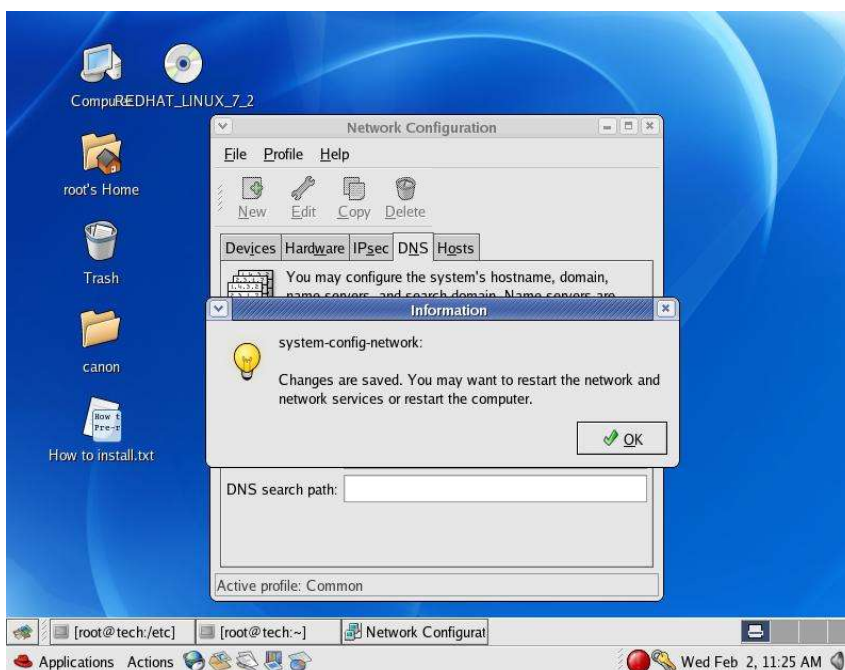
- Give the IP address, mask and gateway in the respective fields as depicted above. IP Address- 192.168.1.15 ; Mask - 255.255.255.0; Gateway- 192.168.1.1
- Click on "OK".



- Now click on DNS.



- Give the hostname if not already given.
- Give the primary and secondary DNS IP addresses as depicted above.
- Primary DNS – 203.94.227.70 ; Secondary DNS – 203.94.243.70
- Click on File and save the settings.



- Click on "OK".
- Restart the PC.
- The PC is now set-up and ready. Test using PING to 192.168.1.1
- Perform other diagnostics in case browsing does not work.