

HUAWEI SmartAX MT882 ADSL router configuration guide

Physical Outlook

Front Panel - LED Indicators

The ADSL Router is equipped with four LEDs on the front panel as described in the table below

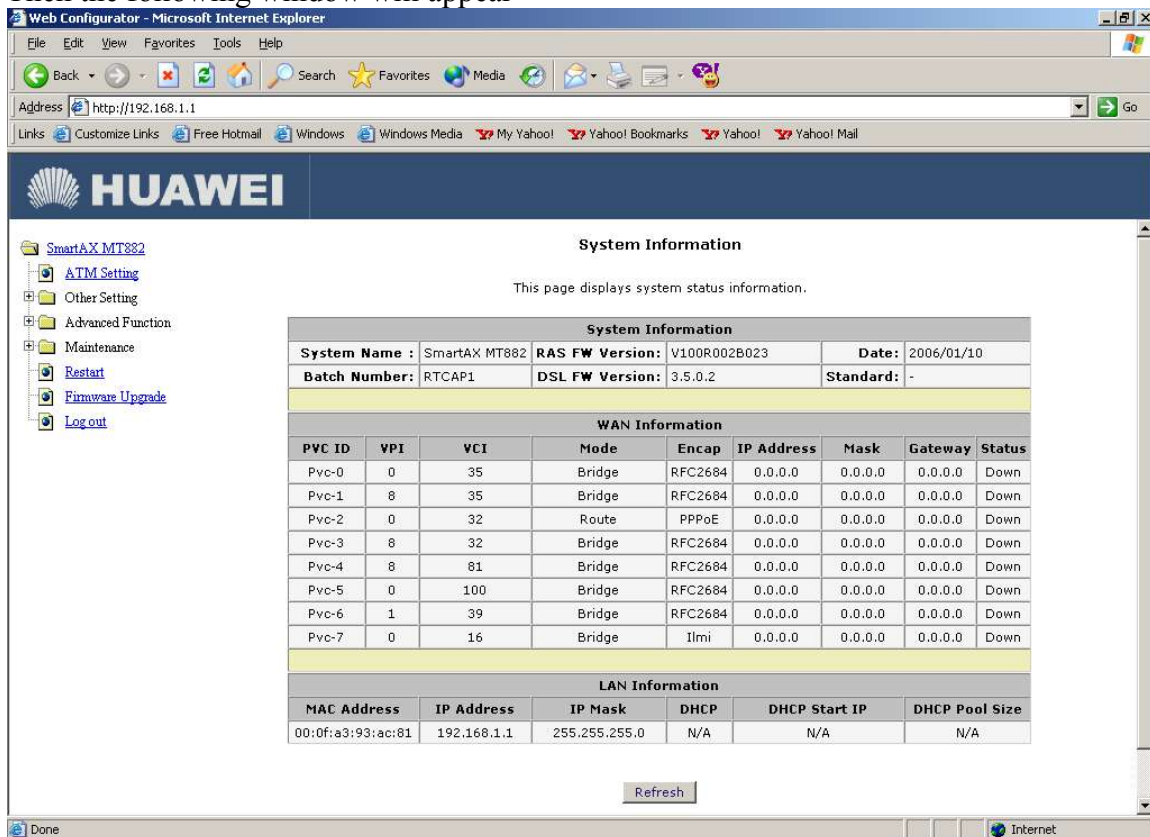
Name of LED	Favarouble Indication	Description
PWR	Green	The Power LED lights up when the router is powered on
Link	Red	This LED becomes RED if router got IP address solid Green shows router trained waiting to get IP address
ACT	<i>Green,blinking</i>	Indicates Data transfer
LAN	Green/Red	Solidly lit when Ethernet connection to PC is OK
USB	Green	Solidly lit when USB connection to PC is OK

Configuration

- 1) Open the Internet Explorer and type <http://192.168.1.1/> Then the following window will appear



- 2) Type username as **admin** and password as **admin**
Then the following window will appear



System Information

This page displays system status information.

System Information					
System Name :	SmartAX MT882	RAS FW Version:	V100R002B023	Date:	2006/01/10
Batch Number:	RTCAP1	DSL FW Version:	3.5.0.2	Standard:	-

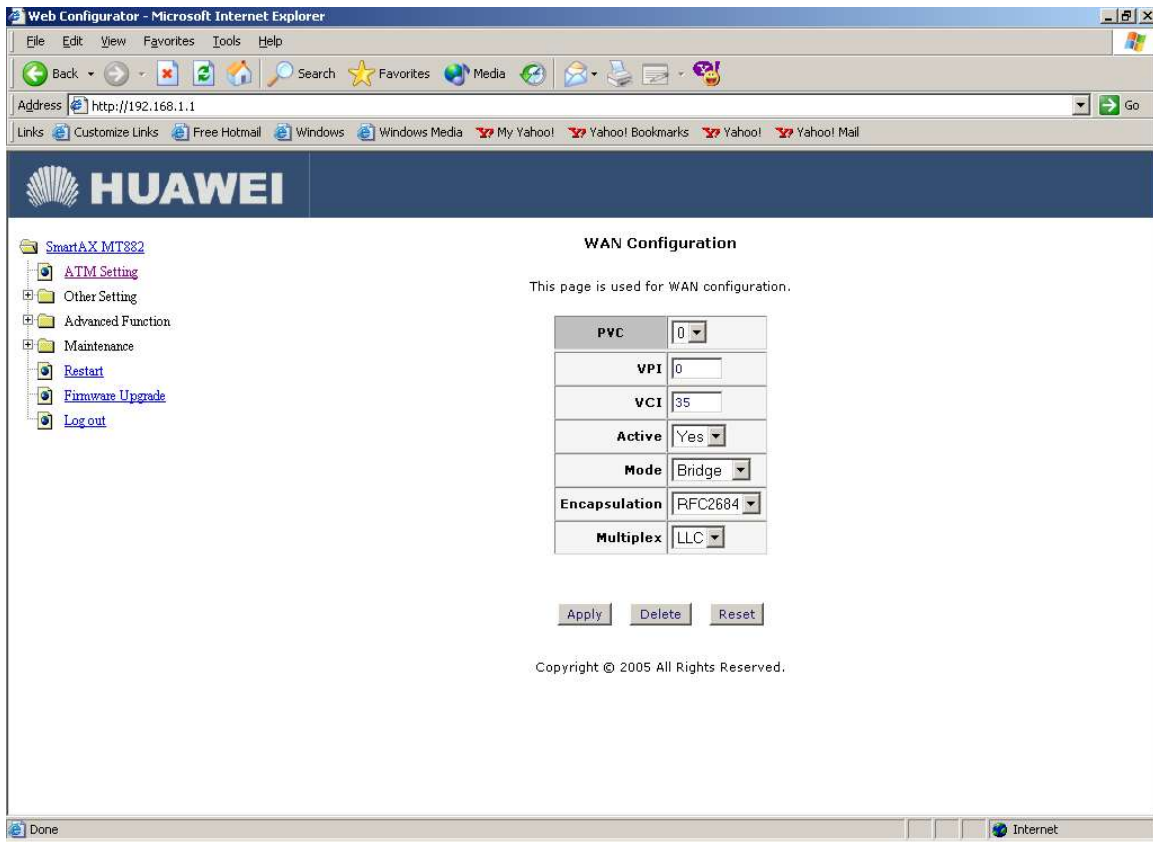
WAN Information								
PVC ID	VPI	VCI	Mode	Encap	IP Address	Mask	Gateway	Status
Pvc-0	0	35	Bridge	RFC2684	0.0.0.0	0.0.0.0	0.0.0.0	Down
Pvc-1	8	35	Bridge	RFC2684	0.0.0.0	0.0.0.0	0.0.0.0	Down
Pvc-2	0	32	Route	PPPoE	0.0.0.0	0.0.0.0	0.0.0.0	Down
Pvc-3	8	32	Bridge	RFC2684	0.0.0.0	0.0.0.0	0.0.0.0	Down
Pvc-4	8	81	Bridge	RFC2684	0.0.0.0	0.0.0.0	0.0.0.0	Down
Pvc-5	0	100	Bridge	RFC2684	0.0.0.0	0.0.0.0	0.0.0.0	Down
Pvc-6	1	39	Bridge	RFC2684	0.0.0.0	0.0.0.0	0.0.0.0	Down
Pvc-7	0	16	Bridge	Ilmi	0.0.0.0	0.0.0.0	0.0.0.0	Down

LAN Information					
MAC Address	IP Address	IP Mask	DHCP	DHCP Start IP	DHCP Pool Size
00:0f:a3:93:ac:81	192.168.1.1	255.255.255.0	N/A	N/A	N/A

Refresh

If you are configuring the router for the first time, please go through Note 1 before further proceedings

3) Click on **ATM setting**



- 4) **Select PVC as 0**
Type **VPI 0 VCI 32**
Mode **Routing**
Servicename **mtnl**
Type **Telephone no as username, C.A No (Subscriber No) as password**
Select Default Route Enable

Web Configurator - Microsoft Internet Explorer

Address: http://192.168.1.1

HUAWEI

This page is used for WAN configuration.

SmartAX MT882

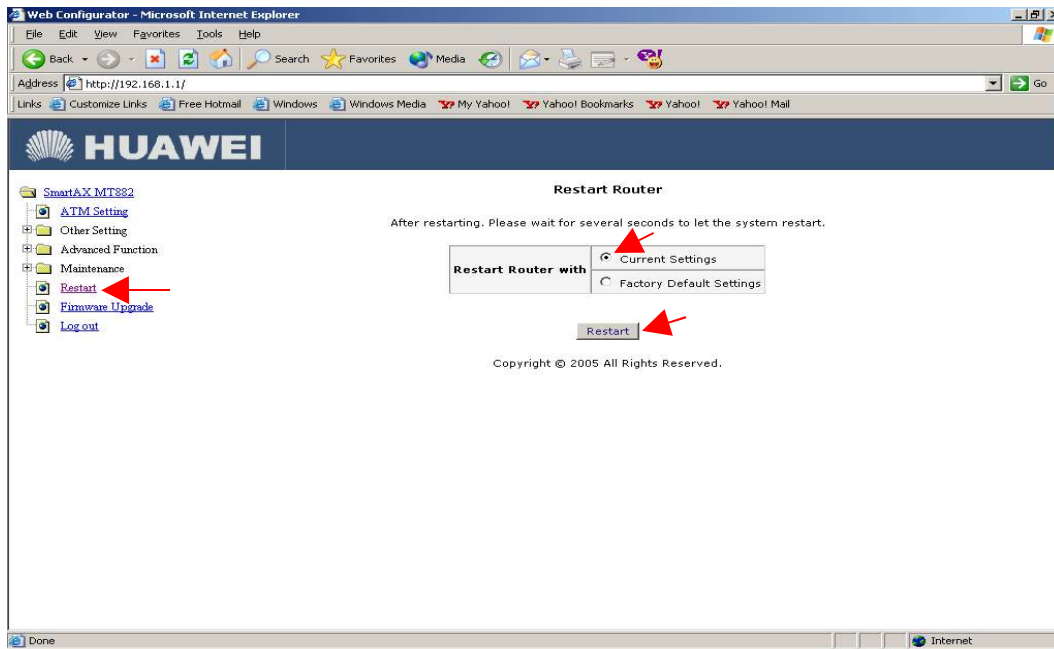
- ATM Setting
- Other Setting
- Advanced Function
- Maintenance
- Restart
- Firmware Upgrade
- Log out

PVC	0
VPI	0
VCI	32
Active	Yes
Mode	Routing
Encapsulation	PPPoE
Multiplex	LLC
Login Information	
Service Name	mtnl
User Name	26405042
Password	*****
IP Address	
Default Route	<input checked="" type="radio"/> Enable <input type="radio"/> Disable
<input checked="" type="radio"/> Obtain an IP Address Automatically	<input type="radio"/> Static IP Address
IP Address	0.0.0.0
Subnet Mask	0.0.0.0
Gateway	0.0.0.0

Done Internet

Click Apply

5) To save the configuration, go to **Restart** , Select **current settings**, Click **Restart**



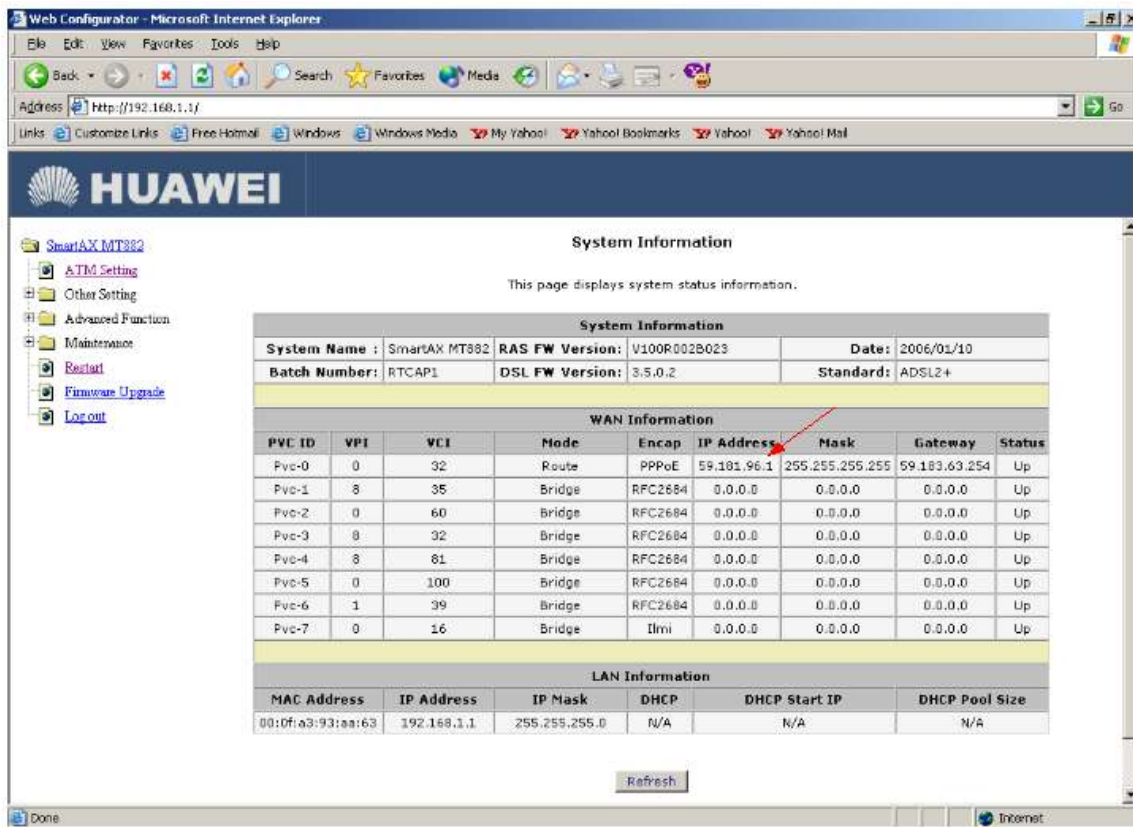
6. At the time of restarting again the following window will appear.
Please enter the username & password as “admin”



Now the configuration is over

To check whether router got Connected or not

Open router homepage, (<http://192.168.1.1/>) If on the PVC 0 row, IP address is got, indicates connectivity of router to the Internet.



The screenshot shows the Huawei SmartAX MT302 web configurator interface. The browser address bar shows <http://192.168.1.1/>. The page title is "System Information" and it displays system status information. The interface includes a navigation menu on the left with options like "ATM Setting", "Other Setting", "Advanced Function", "Maintenance", "Restart", "Firmware Upgrade", and "Log out".

System Information

This page displays system status information.

System Information					
System Name :	SmartAX MT302	RAS FW Version:	V100R002B023	Date:	2006/01/10
Batch Number:	RTCAP1	DSL FW Version:	3.5.0.2	Standard:	ADSL2+

WAN Information

PVC ID	VPI	VCI	Mode	Encap	IP Address	Mask	Gateway	Status
Pvc-0	0	32	Route	PPPoE	59.181.96.1	255.255.255.255	59.183.63.254	Up
Pvc-1	8	35	Bridge	RFC2684	0.0.0.0	0.0.0.0	0.0.0.0	Up
Pvc-2	0	60	Bridge	RFC2684	0.0.0.0	0.0.0.0	0.0.0.0	Up
Pvc-3	8	32	Bridge	RFC2684	0.0.0.0	0.0.0.0	0.0.0.0	Up
Pvc-4	8	81	Bridge	RFC2684	0.0.0.0	0.0.0.0	0.0.0.0	Up
Pvc-5	0	100	Bridge	RFC2684	0.0.0.0	0.0.0.0	0.0.0.0	Up
Pvc-6	1	39	Bridge	RFC2684	0.0.0.0	0.0.0.0	0.0.0.0	Up
Pvc-7	0	16	Bridge	Illi	0.0.0.0	0.0.0.0	0.0.0.0	Up

LAN Information

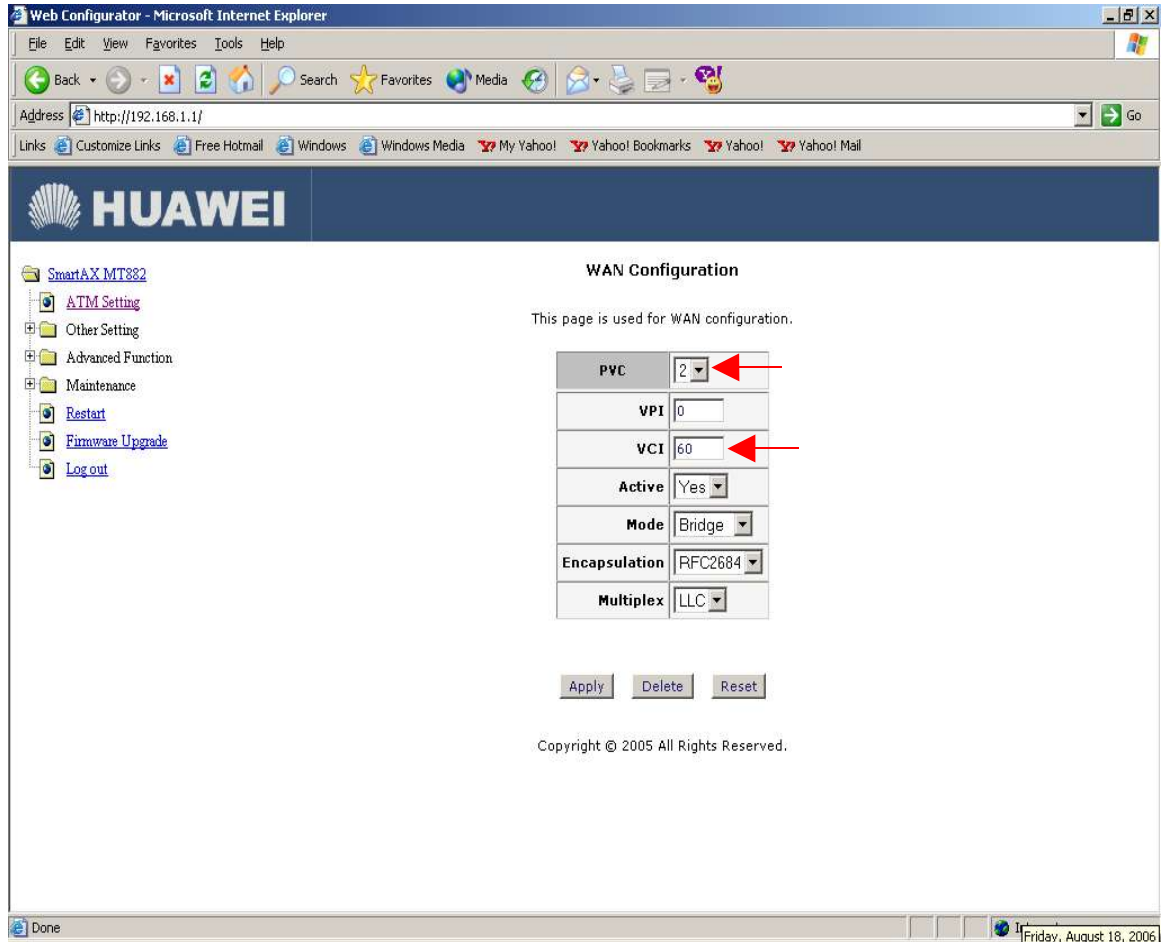
MAC Address	IP Address	IP Mask	DHCP	DHCP Start IP	DHCP Pool Size
00:0f:a3:93:aa:63	192.168.1.1	255.255.255.0	N/A	N/A	N/A

Refresh

Note 1

By default, VPI 0 & VCI 32 is configured for PVC 2; So you are advised to change VCI on PVC 2 as 60 (or anything different from configured VCIs)

To achieve this, go to ATM settings Select PVC as **2** , Select VCI **60** Click **Apply**



The screenshot shows the Huawei Web Configurator interface in Microsoft Internet Explorer. The browser address bar shows <http://192.168.1.1/>. The page title is "WAN Configuration". The main content area displays the following configuration table:

PVC	2
VPI	0
VCI	60
Active	Yes
Mode	Bridge
Encapsulation	RFC2684
Multiplex	LLC

Below the table are three buttons: **Apply**, **Delete**, and **Reset**. The footer of the page reads "Copyright © 2005 All Rights Reserved." The browser status bar at the bottom shows "Done" and the date "Friday, August 18, 2006".

(This is required for router configuration on the first time because router is to be configured on PVC 0 and VPI 0 & VCI 32)

Note 2

At the time of installation, if router IP (<http://192.168.1.1/>) is not pinging, and IP address is not getting after doing 'ipconfig' command enter the following details on the TCP/IP properties of Network Adapter (LAN card/USB)

IP address: 192.168.1.2

Subnetmask : 255.255.255.0

Default Gateway: 192.168.1.1

Primary DNS server: 203.94.227.70

Alternate DNS server : 203.94.243.70

This happens when DHCP server is disabled by default; So to enable this, Go to other Setting --> DHCP mode

Select DHCP as server

Enter Client IP Pool starting address as 192.168.1.2

Enter Primary DNS server: 203.94.227.70

Secondary DNS server : 203.94.243.70

Cannot find server - Microsoft Internet Explorer

Address: <http://192.168.1.1/>

HUAWEI

SmartAX MT882

ATM Setting

Other Setting

- LAN Config
- DHCP Mode**
- NAT
- ADSL Mode
- IP Route

Advanced Function

Maintenance

- Restart
- Firmware Upgrade
- Log out

DHCP Mode

Use this page to configure DHCP.

DHCP	
DHCP	Server
Client IP Pool Starting Address	192.168.1.2
Size of Client IP Pool	32
Primary DNS Server	203.94.227.70
Secondary DNS Server	203.94.243.70
Remote DHCP Server	N/A
DHCP Lease Time	3 Days 0 Hours 0 Min

Apply Reset

Copyright © 2005 All Rights Reserved.