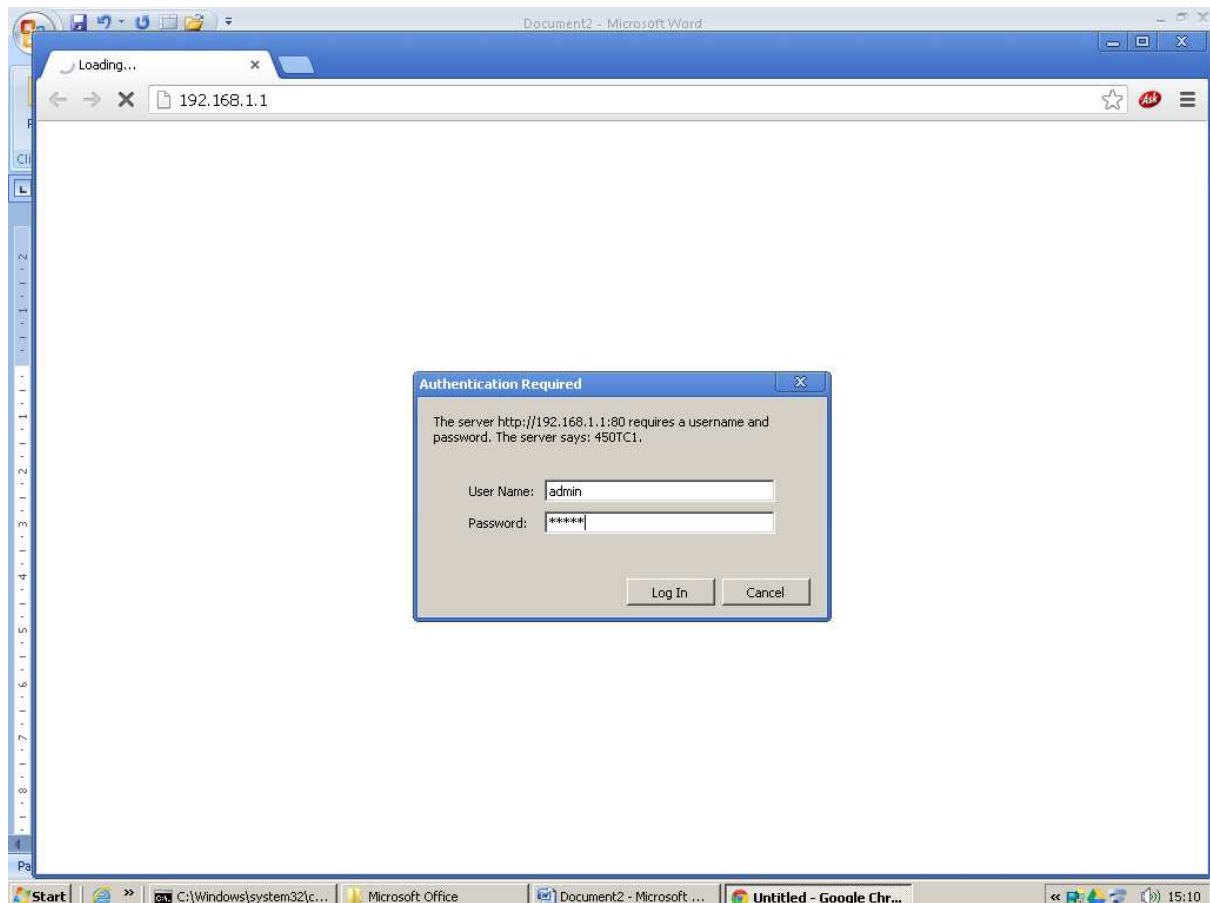


## Port Forwarding for CCTV in Modem/ Router '450TC1'

### Step: 1] Open Modem/ Router Page

Type ip address <http://192.168.1.1>

You will get screen as below



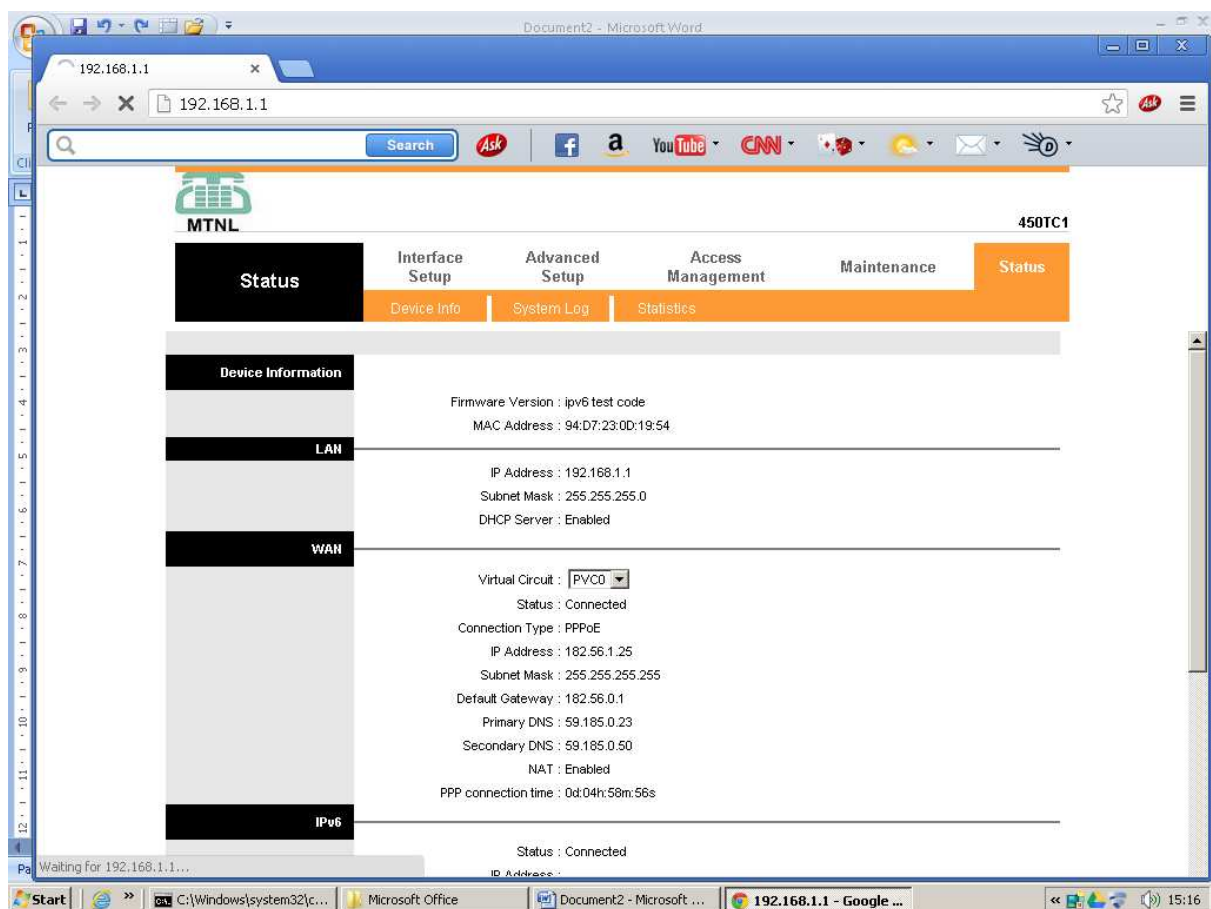
Enter Username: **admin**

Password: admin

then

Click on "Log In" **Button**

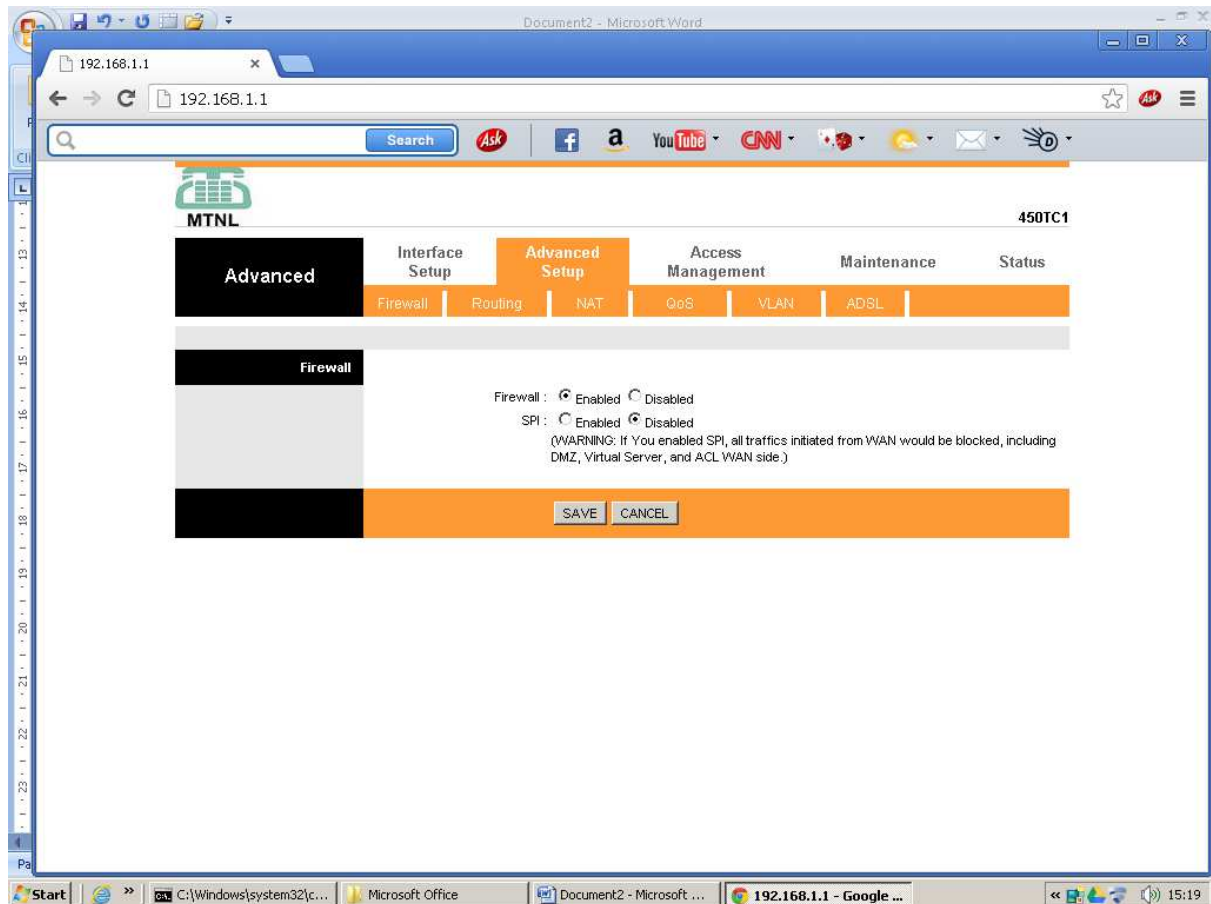
You will get screen as below



Step : 2] Port Forwarding

Click on “ **Advance Setup** ” button

You will get screen as below



Select Firewall: as Disable.

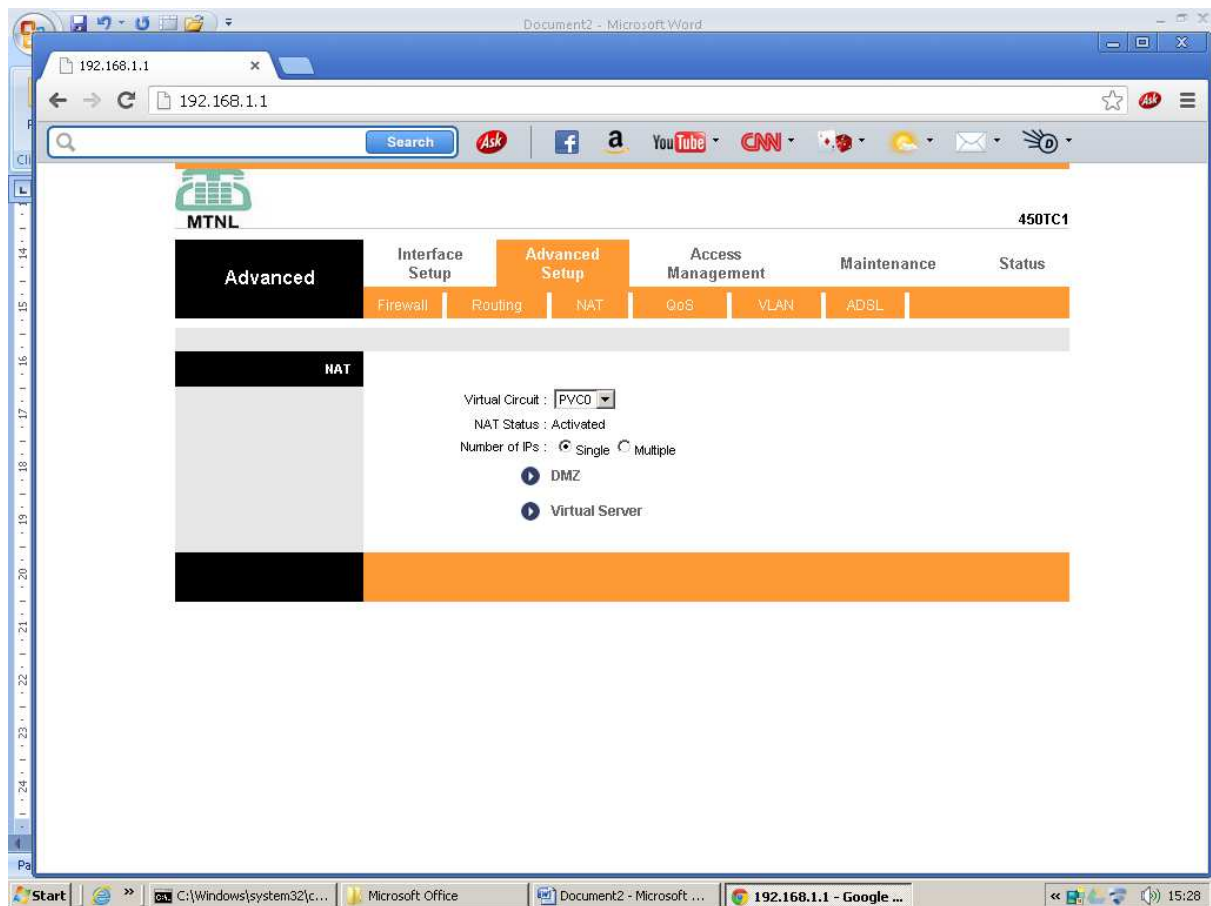
SPI: as Disable.

Click on "SAVE" button

Step: 3] Define Rule

Click on "NAT" button

You will get screen as below



Click on “Virtual Server”

MTNL 450TC1

Advanced Setup

Virtual Server

Virtual Server for : Single IP Account

Rule Index : 1

Application : -

Protocol : ALL

Start Port Number : 0

End Port Number : 0

Local IP Address : 0.0.0.0

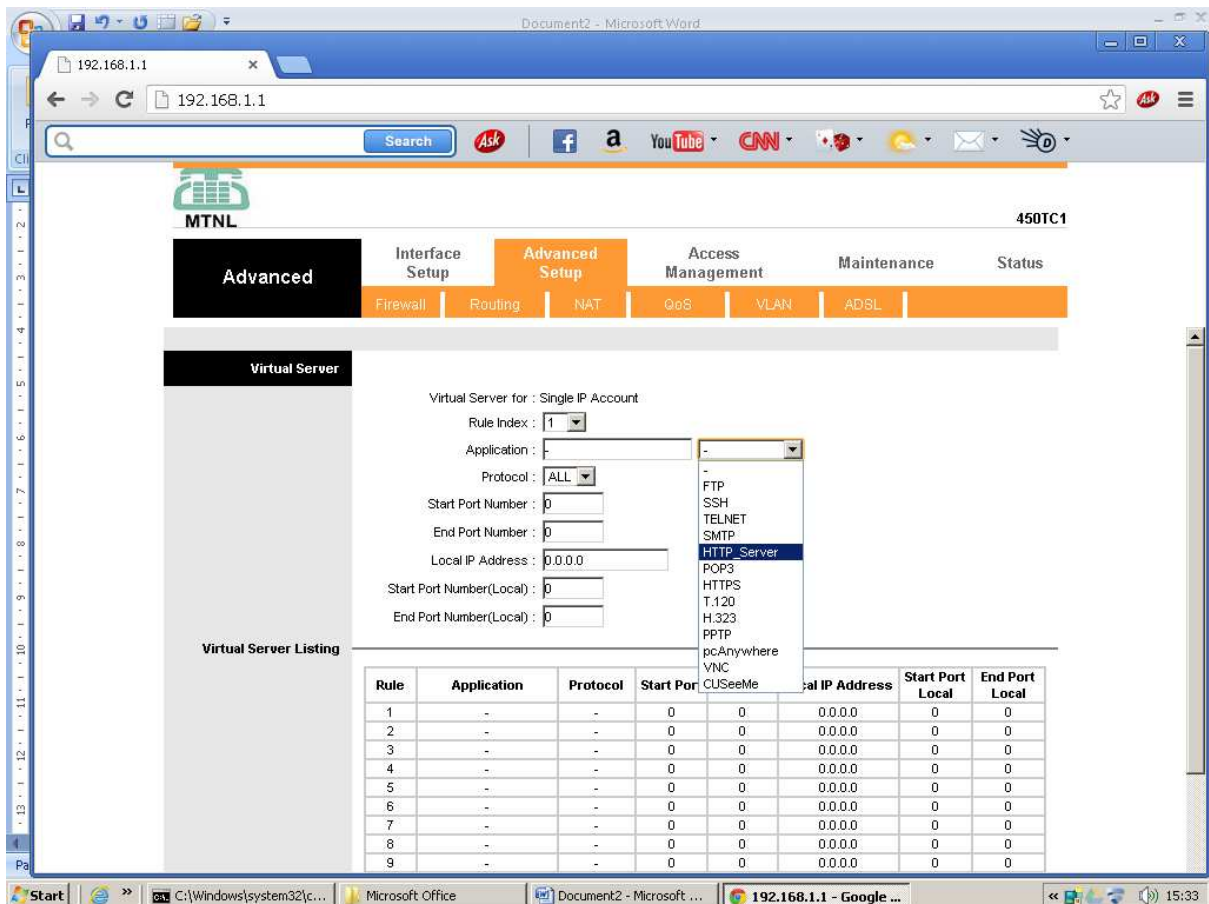
Start Port Number(Local) : 0

End Port Number(Local) : 0

Virtual Server Listing

Rule	Application	Protocol	Start Port	End Port	Local IP Address	Start Port Local	End Port Local
1	-	-	0	0	0.0.0.0	0	0
2	-	-	0	0	0.0.0.0	0	0
3	-	-	0	0	0.0.0.0	0	0
4	-	-	0	0	0.0.0.0	0	0
5	-	-	0	0	0.0.0.0	0	0
6	-	-	0	0	0.0.0.0	0	0
7	-	-	0	0	0.0.0.0	0	0
8	-	-	0	0	0.0.0.0	0	0
9	-	-	0	0	0.0.0.0	0	0

Select Application : under Drop down Box e.g. Http Server shown as in below screen



Enter Local IP Address: Customer's DVR IP e.g. 192.168.1.50

Star Port Number : 80 ( This Port number is of DVR )

End Port Number : 80 (This Port number is of DVR )

Click on " SAVE" Button

You will get screen as below

Virtual Server for : Single IP Account

Rule Index : 1

Application : HTTP\_Server

Protocol : ALL

Start Port Number : 80

End Port Number : 80

Local IP Address : 192.168.1.50

Start Port Number(Local) : 80

End Port Number(Local) : 80

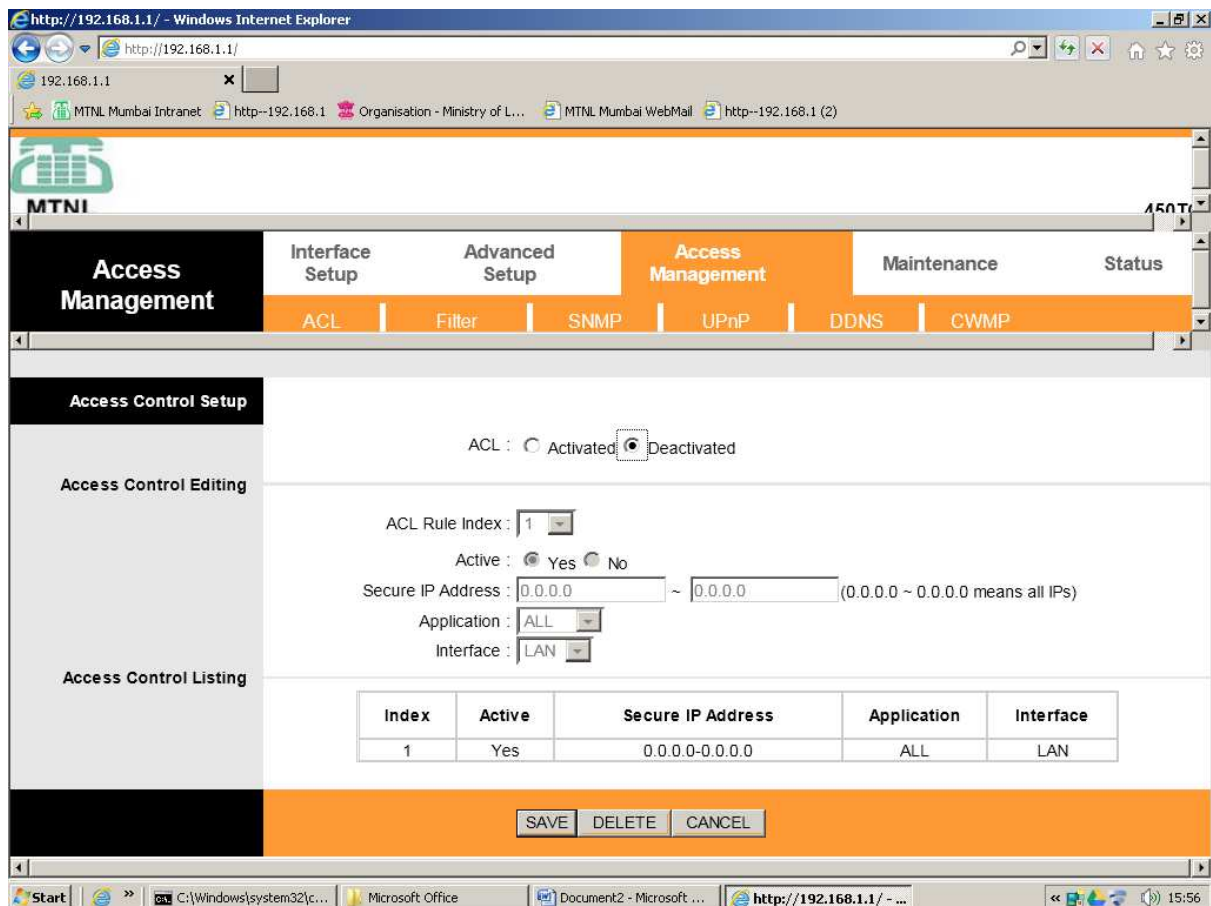
Rule	Application	Protocol	Start Port	End Port	Local IP Address	Start Port Local	End Port Local
1	HTTP_Server	ALL	80	80	192.168.1.50	80	80
2	-	-	0	0	0.0.0.0	0	0
3	-	-	0	0	0.0.0.0	0	0

Now Rule 1 is defined .

Step : 4] Pinging the Static IP Address

Click on “Access Management”

Select ACL: as “Deactivated”



Click in “SAVE” button

Step : 5] To save the Modem / Router Configuration .

Click on “ Maintenance” then “ SysRestart”

Select System Restart with : as Current Settings

Click on “RESTART” BUTTON.

Now wait for two minutes, Modem/Router is rebooting.

After 2 minutes customers allotted static IP is pinging.

DE BB HD

MTNL Mumbai. Date : 31-10-2013.