

UT-STAR (UT-304R2U - firmware version R1.00B02.2A.UT) configuration guide

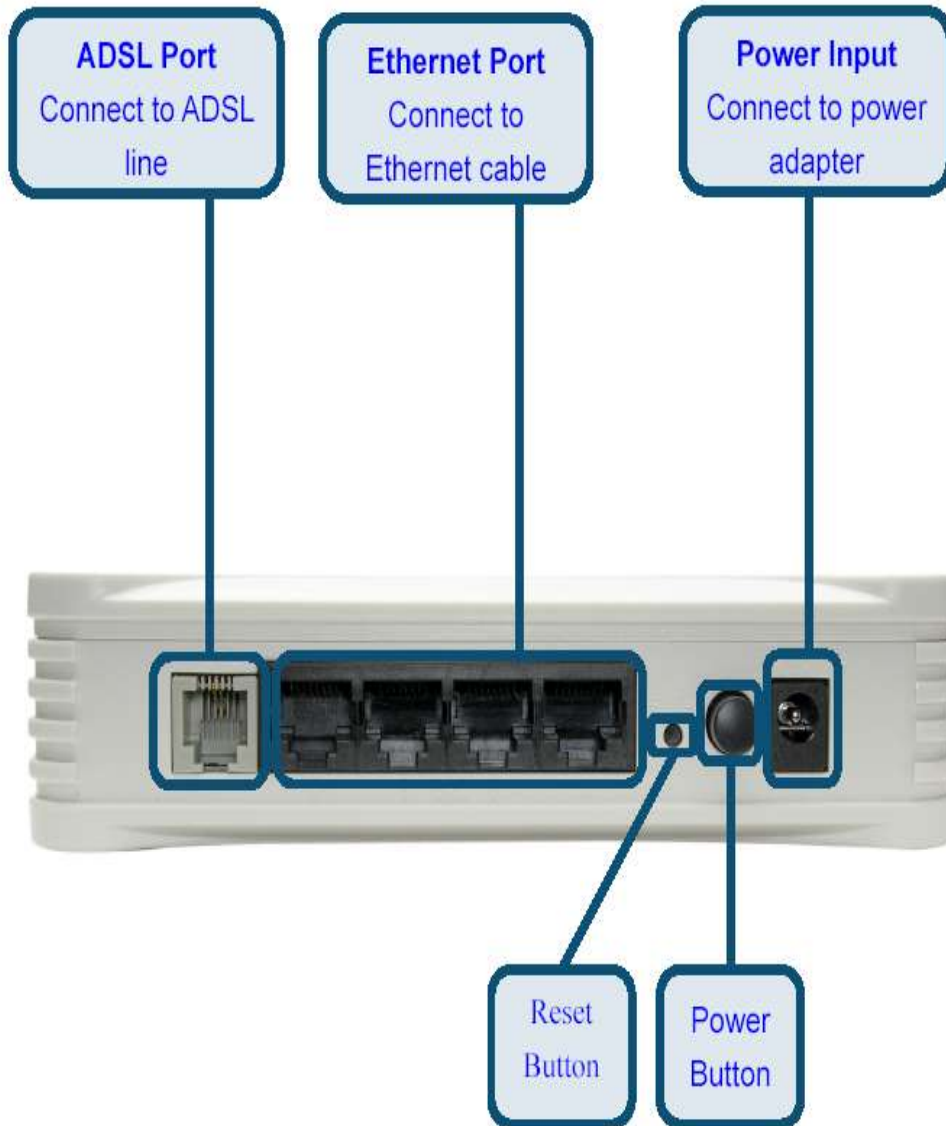
UT Star 304R2U is compatible with Ethernet port only. In this modem 4 Ethernet port is provided to have a four parallel connection at a time.

Physical Outlook

Front Panel Display



Rear Panel Connection



Front Panel LED Indicators & Interfaces

ITEM	Name	State introduction
Indicator	Power	A steady green light means the power connection works properly.
	Status	Blinking green indicates normal operation. A system failure is indicated by either green or an unlit LED.
	ADSL Link/Act	Solid green indicates a good ADSL link. Blinking green indicates an active connection.
	Ethernet Link/Act	Solid green indicates a good Ethernet link. Blinking green indicates an active connection.
Interface	Line	Connected with phone line or "ADSL" port of the splitter.
	Ethernet	To be connected to a PC network card by a straight-through network cable, also can use a crossover cable to connect to Hub, Switch or Router.
	Power	Power interface, Connect with power adapter.
	Reset Button	Reset to default setting. Press the button for 5 seconds. Then you can reset the Router with the default value.
	Power Button	To turn the power off and on.

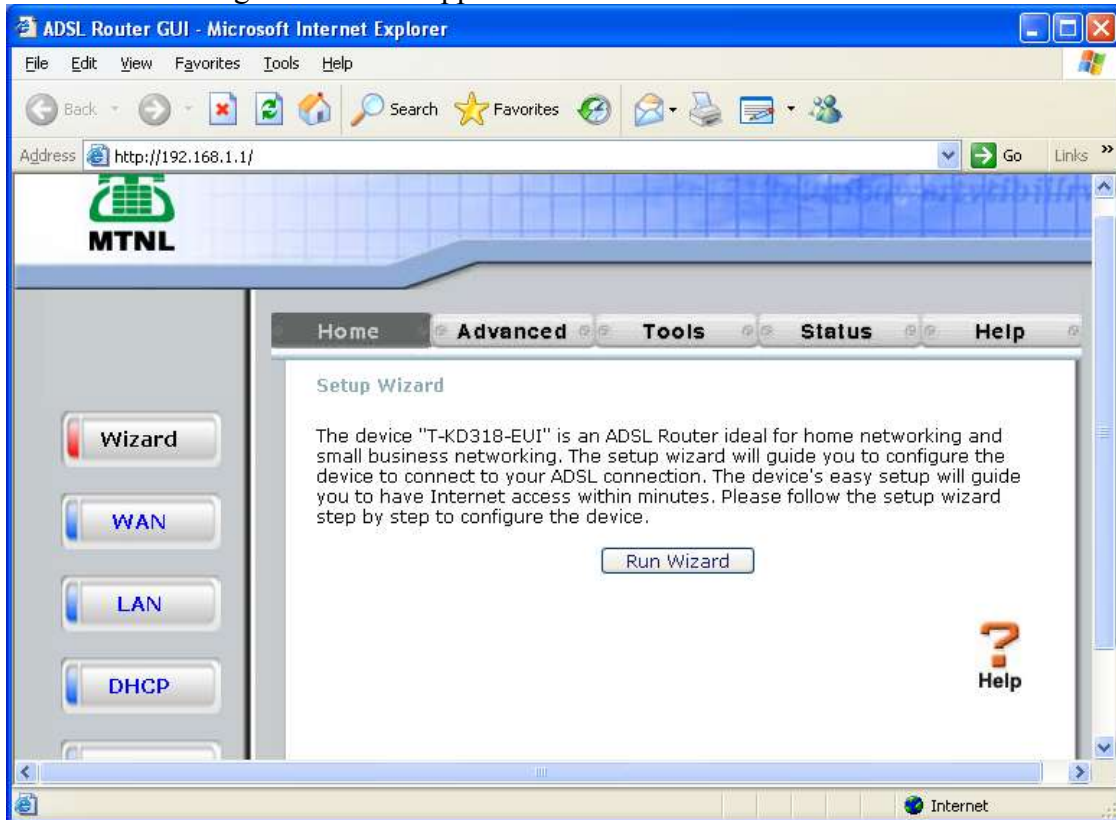
Configuration

- 1) Open the Internet Explorer and type <http://192.168.1.1/> Then the following window will appear



- 2) Type username as **admin** and password as **admin**

Then the following window will appear



3) Click on WAN

The screenshot shows the MTNL router's configuration interface. The top left features the MTNL logo. A navigation bar includes 'Home', 'Advanced', 'Tools', 'Status', and 'Help'. A sidebar on the left contains buttons for 'Wizard', 'WAN', 'LAN', 'DHCP', and 'DNS'. The main content area is titled 'WAN' and contains the following settings:

WAN

Use this page to quickly configure the system.

ATM Interface: PVC-0
VPI: 0
VCI: 32
Virtual Circuit: Enabled

WAN Settings

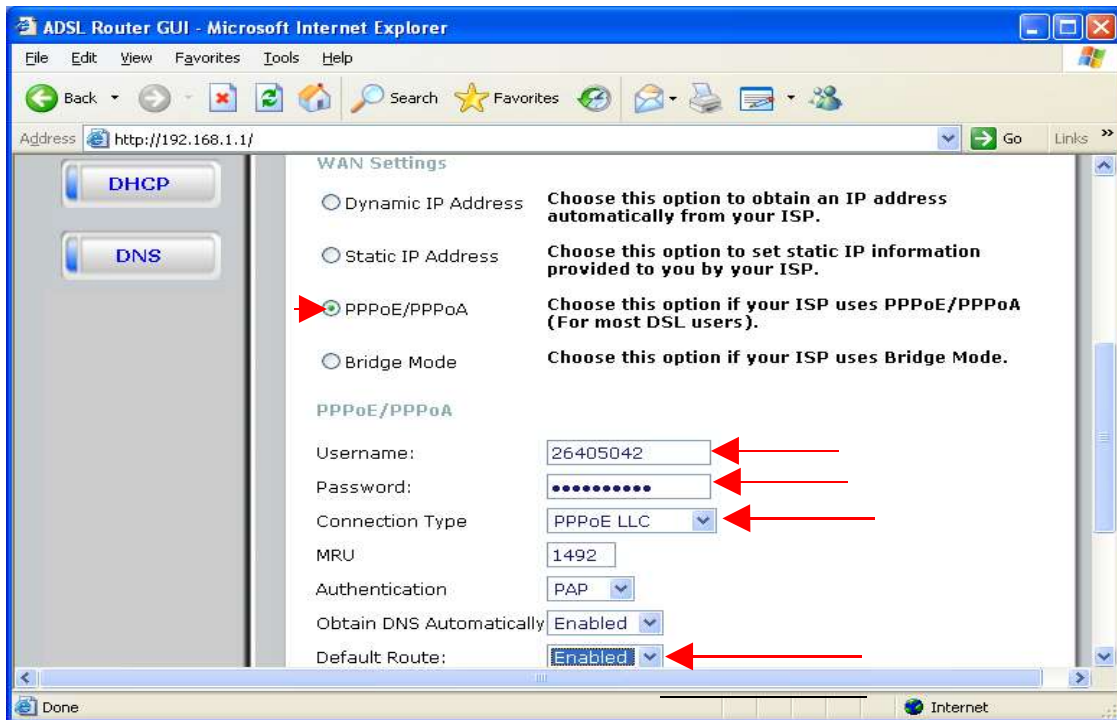
- Dynamic IP Address: Choose this option to obtain an IP address automatically from your ISP.
- Static IP Address: Choose this option to set static IP information provided to you by your ISP.
- PPPoE/PPPoA: Choose this option if your ISP uses PPPoE/PPPoA (For most DSL users).
- Bridge Mode: Choose this option if your ISP uses Bridge Mode.

PPPoE/PPPoA

Username: Guest
Password:
Connection Type: PPPoA VC-Mux
MRU: 1492
Authentication: PAP
Obtain DNS Automatically: Enabled
Default Route: Disabled
NAT: Enabled
IGMP: Disabled

Apply Cancel Help

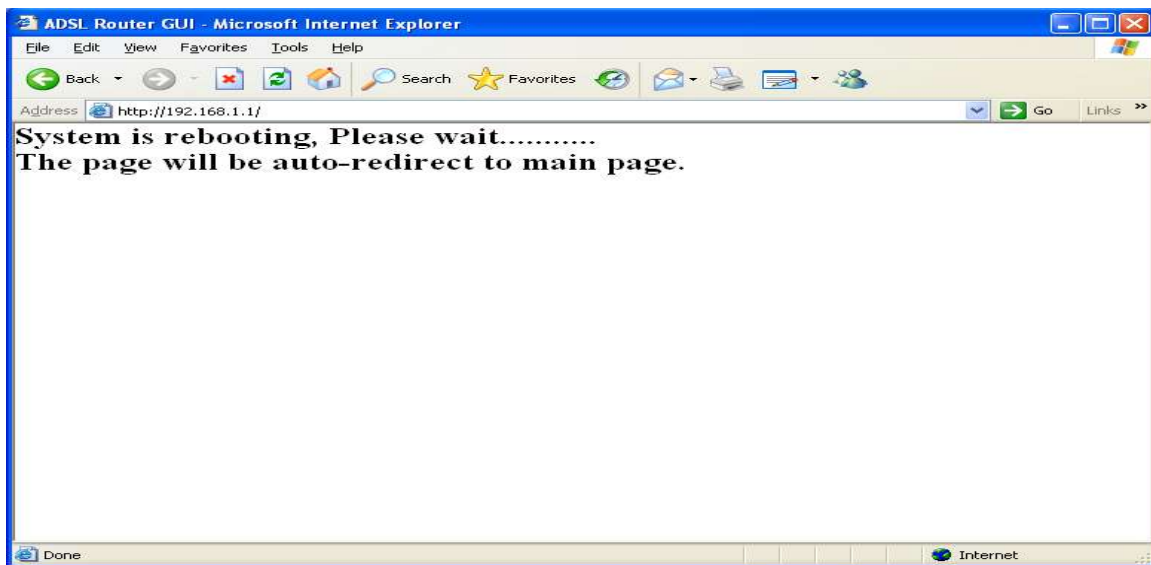
- 4) Select **WAN Settings** as **PPPoE/PPPoA** mode
Type **Telephone No** as **username**
C.A No (Subscriber No) as **Password**
Select connection type as **PPPoE LLC**
Make **Default Route** **Enabled**
Make **NAT** Enabled



- 5) Click on **Apply**

6) Go to **Tools --> Misc** Click on **Save & Reboot**

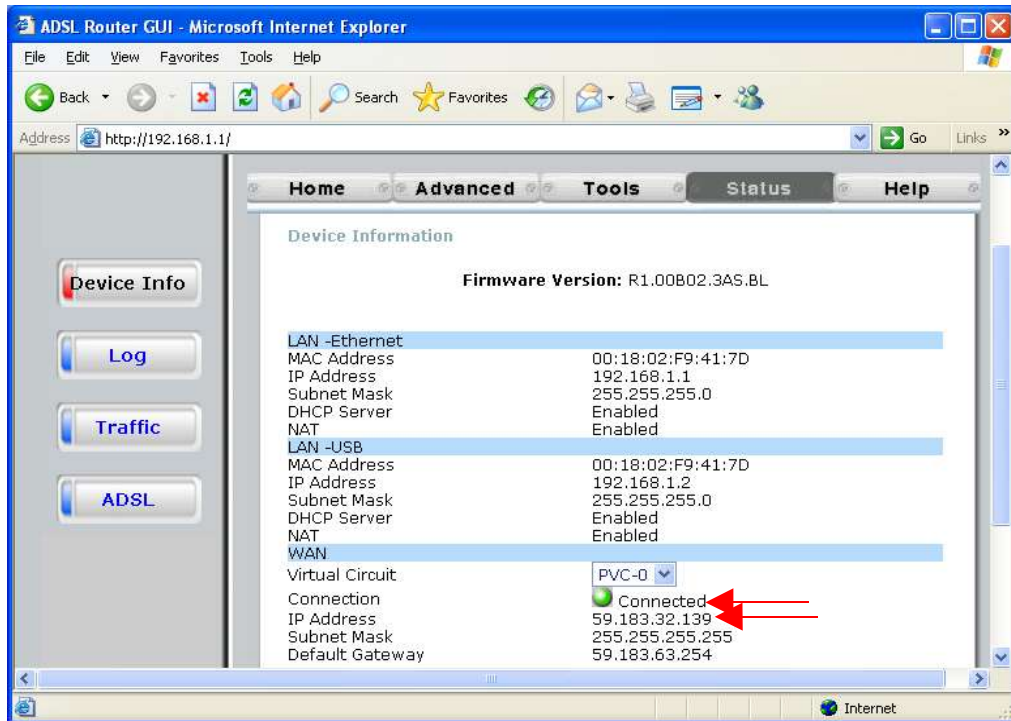
Now the following Window will appear



8) After rebooting the ADSL router configuration is over.

Checking whether router is connected to internet or not

After opening the router homepage (<http://192.168.1.1/>), go to **Status**. Under the heading WAN, Status.If Status is **connected** and **IP address is got**, then router is connected to internet as shown below.



The screenshot shows the ADSL Router GUI in Microsoft Internet Explorer. The browser address bar displays <http://192.168.1.1/>. The router's status page is open, with the 'Status' tab selected. The 'Device Information' section shows the following details:

Device Information	
Firmware Version: R1.00B02.3AS.BL	
LAN -Ethernet	
MAC Address	00:18:02:F9:41:7D
IP Address	192.168.1.1
Subnet Mask	255.255.255.0
DHCP Server	Enabled
NAT	Enabled
LAN -USB	
MAC Address	00:18:02:F9:41:7D
IP Address	192.168.1.2
Subnet Mask	255.255.255.0
DHCP Server	Enabled
NAT	Enabled
WAN	
Virtual Circuit	PVC-0
Connection	● Connected
IP Address	59.183.32.139
Subnet Mask	255.255.255.255
Default Gateway	59.183.63.254

Two red arrows point to the 'Connection' status 'Connected' and the 'IP Address' '59.183.32.139' in the WAN section, indicating that the router is successfully connected to the internet.