

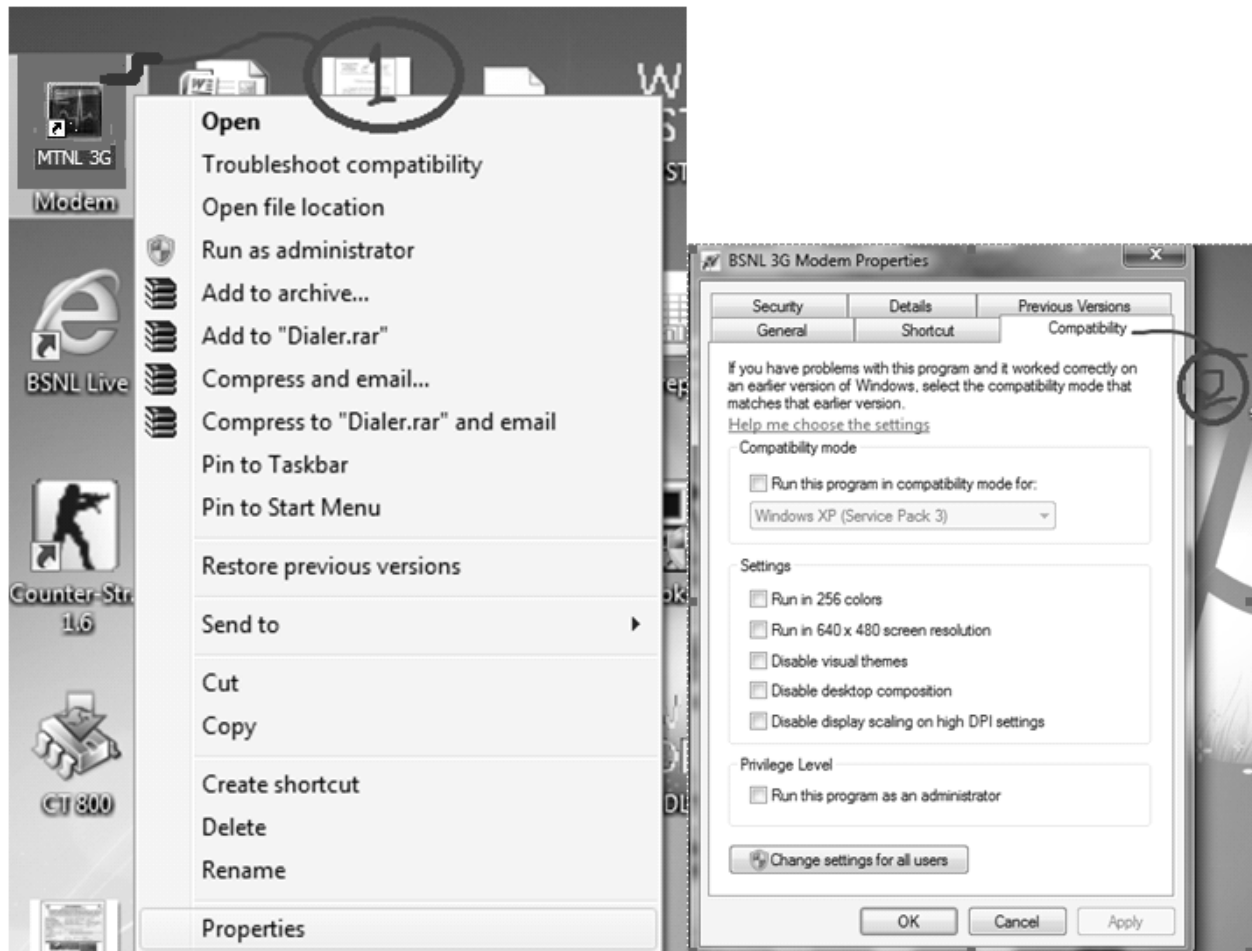
## Data Card Setup Procedure for Windows 8

After inserting Data Card follow the instruction to install the software .

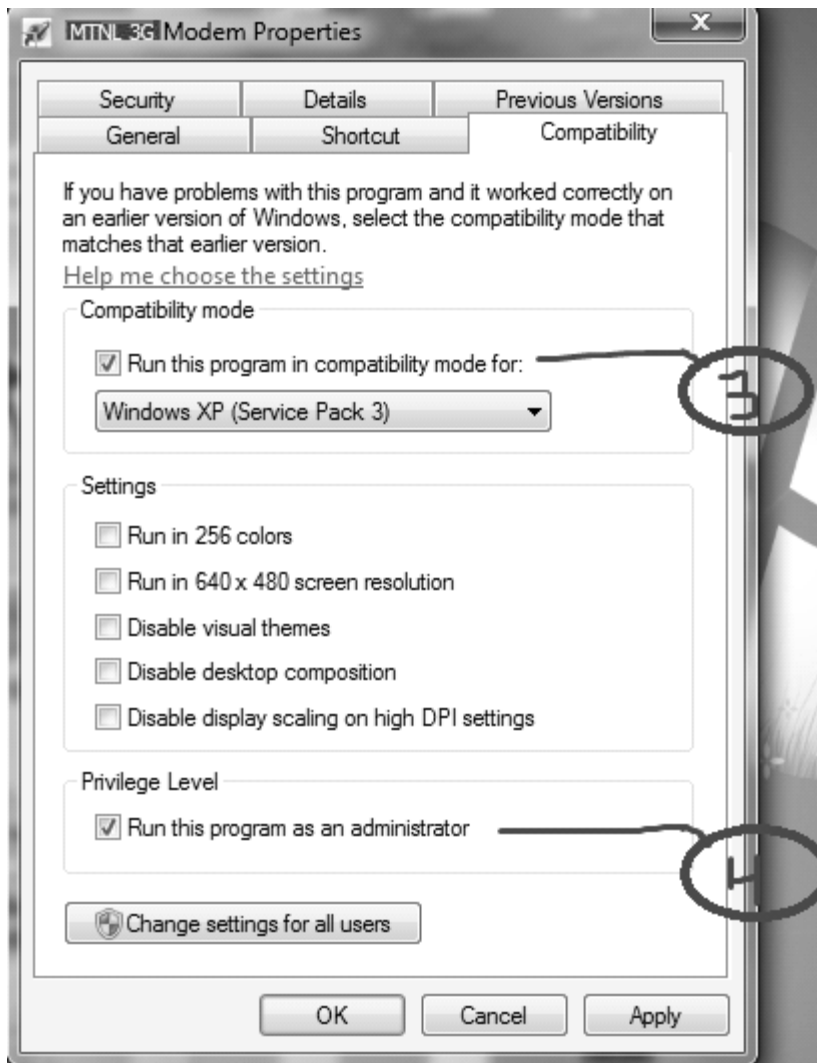
(Optional: If Auto run doesn't come ,Go to My computer, right click and explore MTNL3G modem, and run setup file.)

Then after installation,

1. Make right click on the icon created on your desktop, go to the properties.



2. Now look here for compatibility, click it.
3. In compantibility mode click on (run this program in compatibility mode for) and select for windowsXP (service pack 3).
4. In privilege level click on (run this program as an administrator).
5. Then apply and ok.



**Then click on Apply**

**Click on OK**

**Now double click on MTNL 3G modem application and go to**

**Settings-connection-Add**

**Profile name-mtnl.net**

**Number-\*99#**

**Username-**

**Password-**

**APN-mtnl.net**

**Click on apply button**

**Plz note that username and password should be blank**

**Now from profile list-select 'mtnl.net' and click on 'set to default'**

**Now got to Internet Tab and click on 'connect'  
Internet is now connected.**