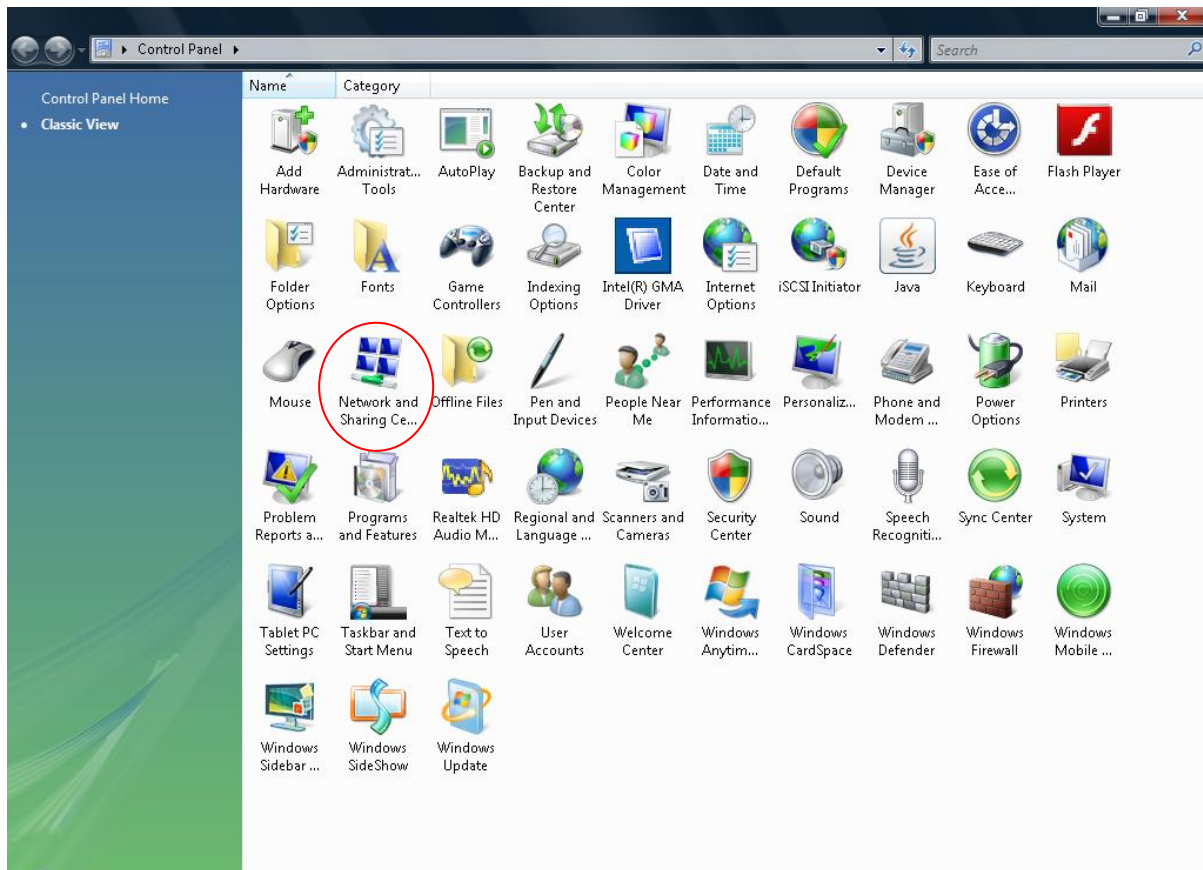


## ➤ How to configure LAN Settings in Windows Vista

1. Click Start button and Go to Control Panel.

2. In Control Panel, select Network and Sharing Centre.



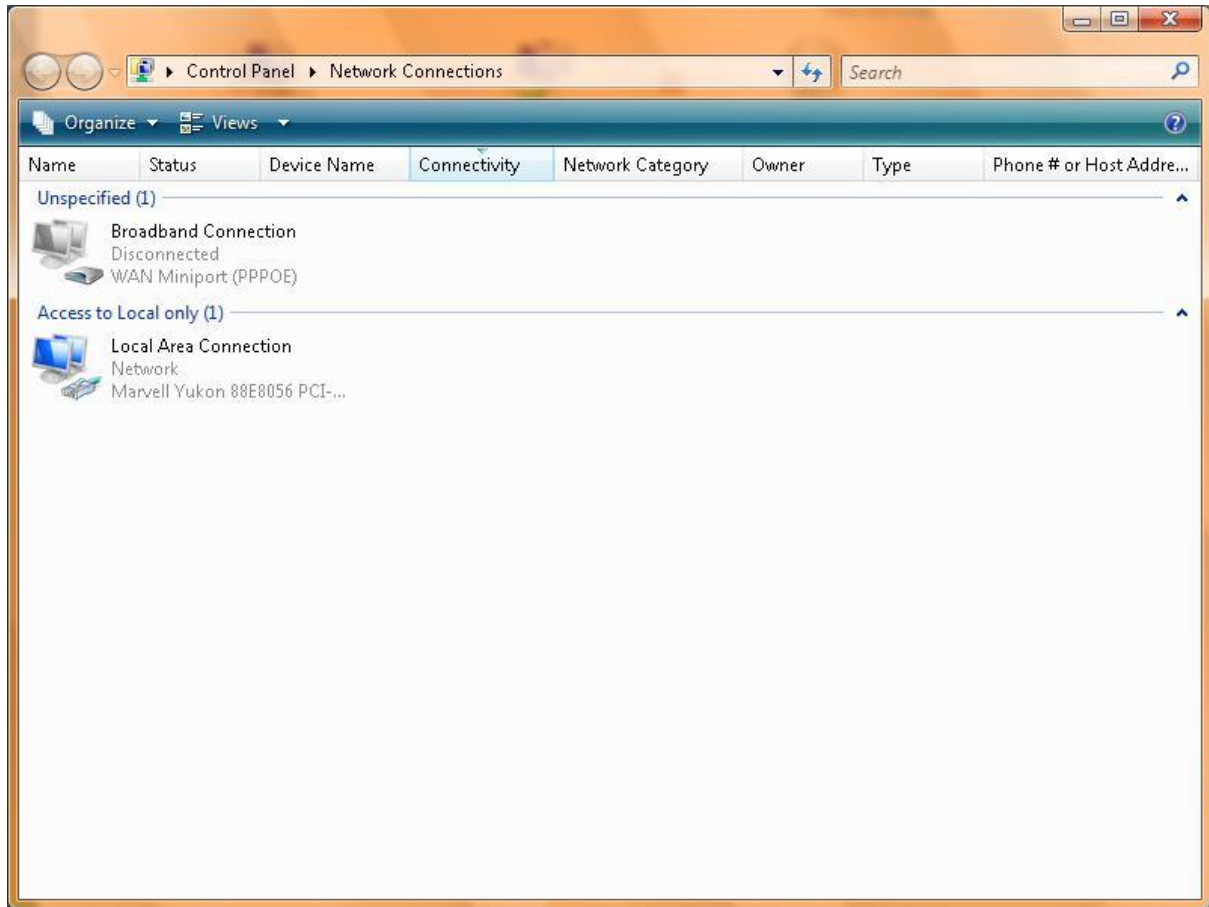
## 2. Network and Sharing Centre

From Network and Sharing panel, go to Manage Network Connections.

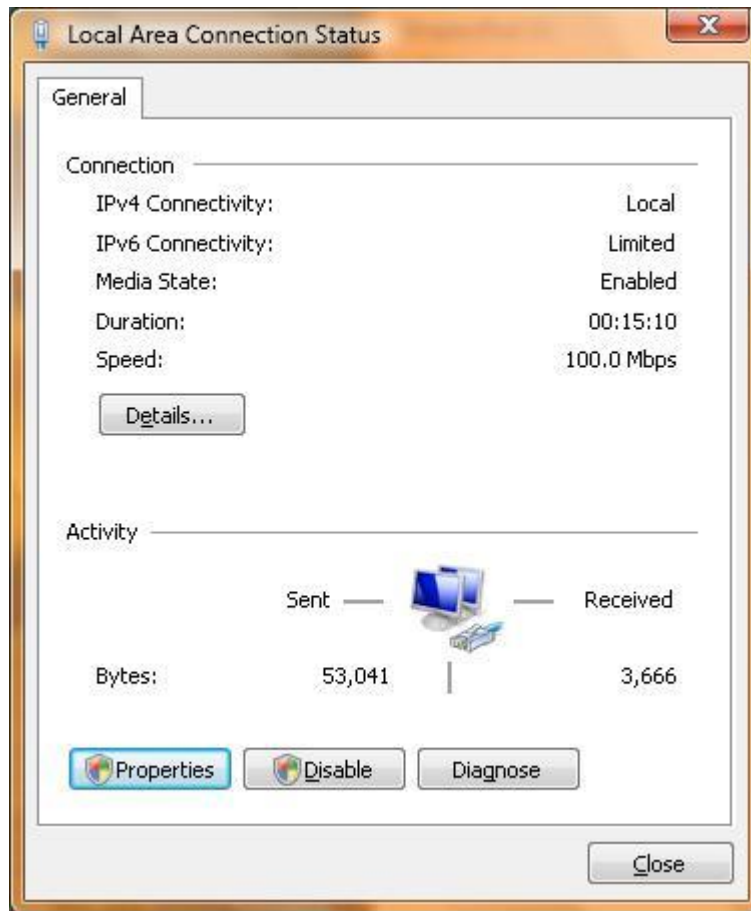
The screenshot shows the Windows Network and Sharing Center. The address bar at the top indicates the path: Control Panel > Network and Sharing Center. On the left, a sidebar lists tasks: View computers and devices, Connect to a network, Set up a connection or network, **Manage network connections** (circled in red), and Diagnose and repair. Below these are 'See also' links for Internet Options, Windows Firewall, and Windows Mobile Device Center. The main content area is titled 'Network and Sharing Center' and features a network diagram with 'MTNL-PC (This computer)', 'Multiple networks', and 'Internet'. Below the diagram are two network connection cards: 'Broadband Connection (Public network)' with 'Local and Internet' access and 'Broadband Connection' connection; and 'Network 7 (Public network)' with 'Local only' access and 'internet' connection. At the bottom, the 'Sharing and Discovery' section shows settings for Network discovery (On), File sharing (Off), Public folder sharing (Off), Printer sharing (Off), Password protected sharing (On), and Media sharing (Off). Links for 'Show me all the files and folders I am sharing' and 'Show me all the shared network folders on this computer' are also present.

### 3. Manage Network Connections

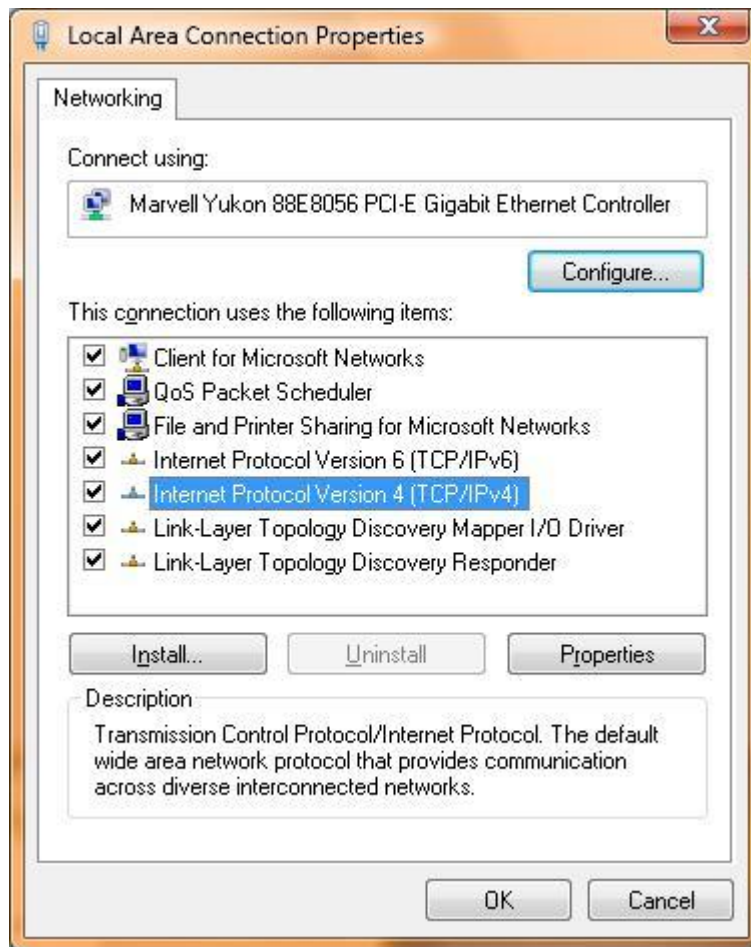
In Manage Network Connections window double-click on Local Area Connection.



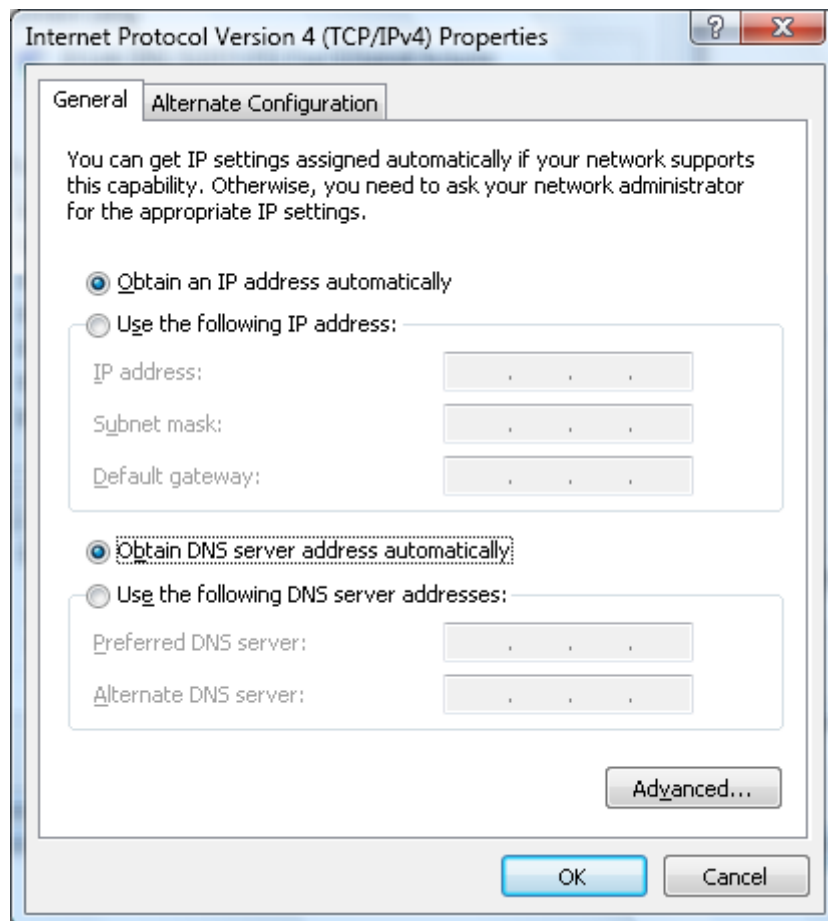
4. From 'Local Area Connection Status' Dialog Box, select 'Properties'.



5. From 'Local Area Connection Properties' Dialog Box select 'Internet Protocol Version 4' and then goto 'Properties'.



6.a) Select 'Obtain an IP Address automatically' and 'Obtain DNS Server address automatically'.



6.b) Otherwise make selections (for e.g. as given below). For DNS Server Addresses you may have to contact our customer support, i.e. 1504.

